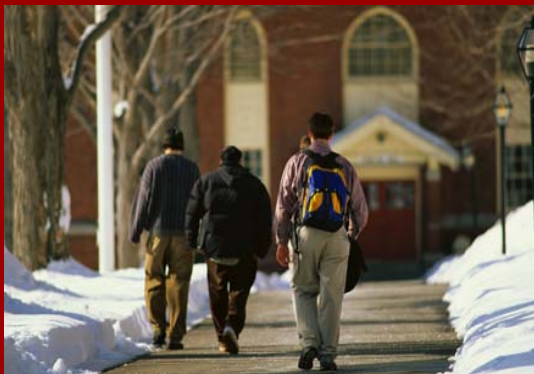


Student Success Replication Project

The Student Success Replication Project is designed to train and support Community Mental Health Centers to assimilate the coordination and implementation of the Student Success Training Program intra-agency.

In Partnership with:

Community Mental Health Centers, Universities, Community Colleges, & Consumer Run Organizations (CRO's)



For More Information:

Call toll-free:
1(877)458-6804



Susan Kobzar,
Student Success Trainer
susank@ku.edu

Dinah Dykes,
*Student Success
Program Coordinator*
ddykes@ku.edu

University of Kansas

Supported Education Group
Student Success Training Program
2706 Iowa Suite C.
Lawrence, KS 66046-4102

www.socwel.ku.edu/projects/SEG/

Supported Education: "It's Good Medicine!"

Application criteria:

- Must be 18 years or older
- Documented psychiatric disability
- High School diploma or GED

The University of Kansas
School of Social Welfare
Office of Mental Health
Research & Training
Supported Education Group

Student Success Training Program & Replication Project



In Partnership with Kansas
Department of Social Rehabilitation
Services (KS SRS)

Student Success Training Program

Student Success is a supported education training that, encourages and supports **growth through learning** for people with psychiatric disabilities.

Student Success; promotes a **positive academic experience** within a supportive environment on a college campus.

Partnerships

Community mental health centers and local educational institutions facilitate the continuation of educational opportunities.

Opportunities

People with a psychiatric disabilities prepare for returning to post-secondary education or training and grow in their own recovery.

Comfortable Forum

Students establish relationships with educational staff prior to their "official" return to post-secondary education/training.

Supported Education

is providing services to people who experience mental illness in order to gain access to and utilize resources that will help them succeed in post-secondary educational activities.

Student Success Classroom Instruction

On campus training is:

- 16 week semester
- Classes held on college campus
- 32 hours of classroom instruction
2 hours / per week

Topics include:

Time Management & Organizational Skills

Basic & Internet Computer Skills

Stress Management Techniques

Individual Learning Styles

Financial Aid Tips & Admissions Process

Test Taking Tips

Reading skills & Note Taking

College Tour

Writing & Research Skills

Accessing College Resources &

The following Post-Secondary academic Sites have partnered with the Student Success Program:

University of Kansas
Washburn University
Johnson County Community College
Kansas City Kansas Community College
Neosho Community College

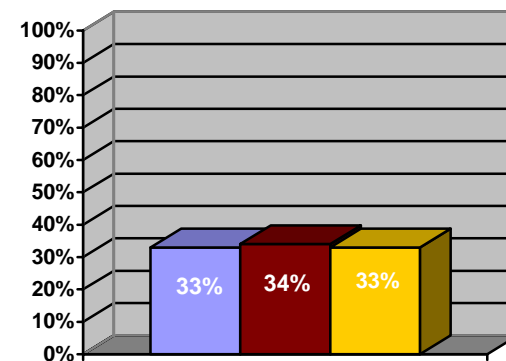
Educational Support Group (ESG)

Support Group:

- Students receive academic support from peers and Educational Support Group Facilitator.
- A review of material and help with homework is provided
- Students create an individual educational goal plan to enhance future academic activities.

One Year Post-Student Success Educational Results:

Cumulative from Spring 2004 ~ Spring 2006



■ Pre-educational
■ Post Secondary
■ No educational

"...I would never have considered seeking a college degree, ... without it (Student Success)."
~ Student Success graduate